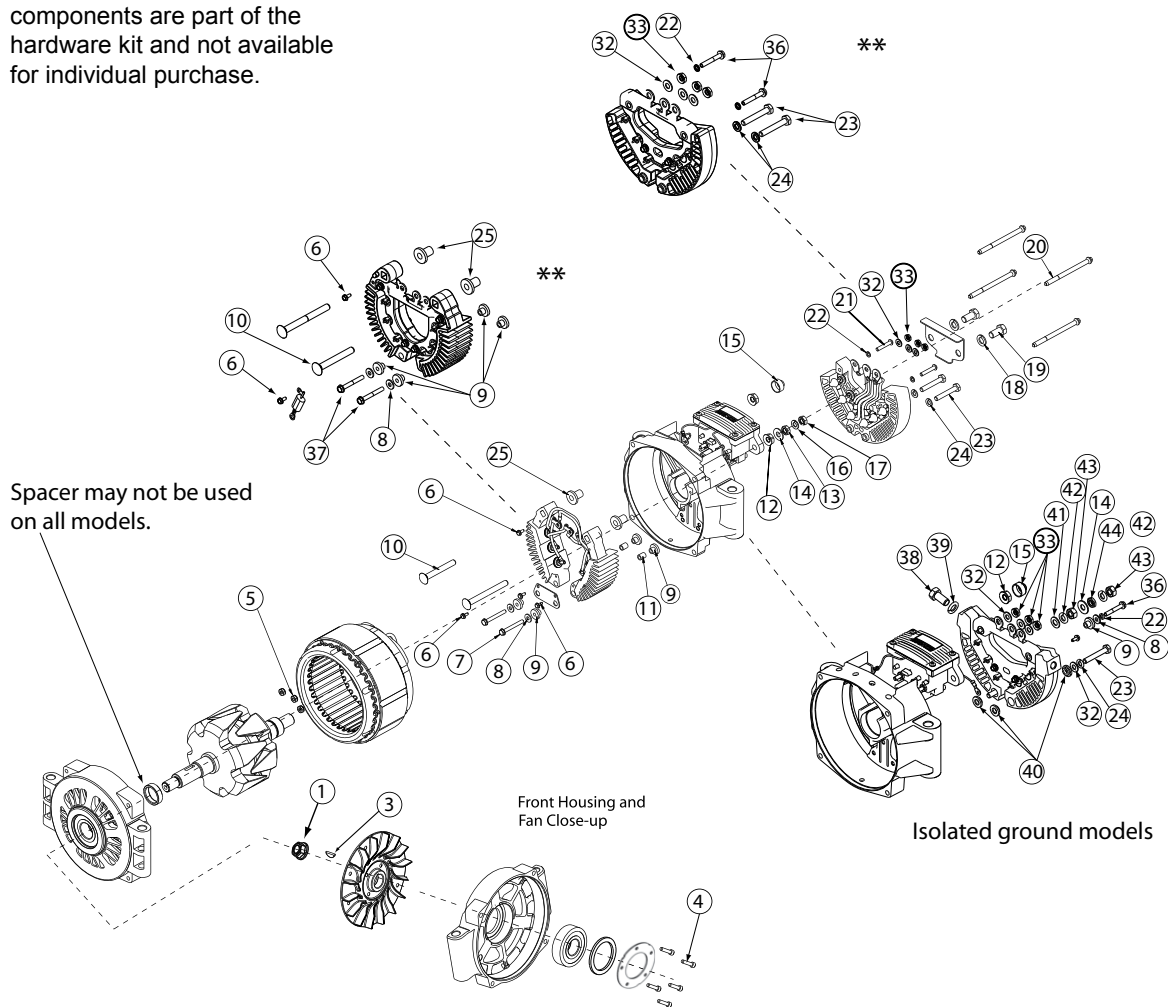


Source: Leece-Neville Heavy Duty Systems Division - Arcade, NY USA
Date: JULY 7, 2017
Bulletin No: TSB-3005
Models: 185A-320A 4900 Alternators
Subject: Hardware Kit for 4000 Series Pad Mount Alternators K212104735S

4000 Series Pad Mount

NOTE: All of these components are part of the hardware kit and not available for individual purchase.



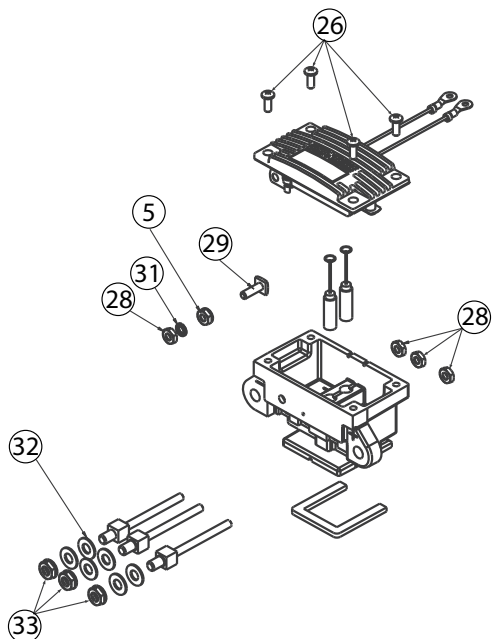
** Rectifier rings available on current production models and service parts.

Important: The information contained in this bulletin is intended for use by trained, professional technicians who have the proper tools, equipment, and training to perform the required maintenance described above. This information is NOT intended for 'do-it-yourselfers'; and you should not assume that this information applies to your equipment. If you have any questions regarding this information please visit our website at www.prestolite.com, or contact our technical service department at:

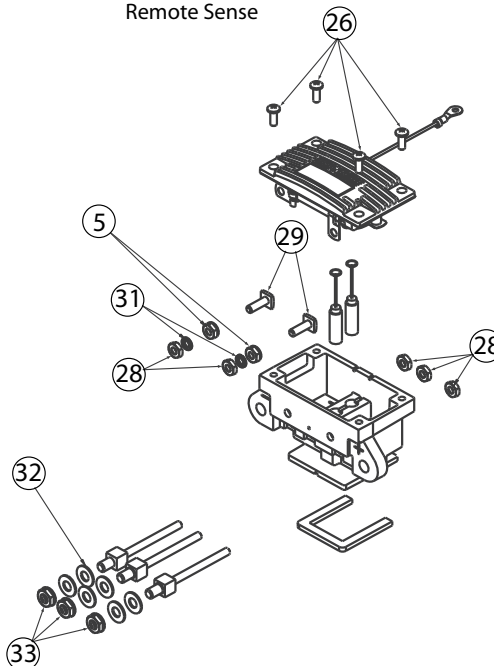
Date: JULY 7, 2017

Bulletin No: TSB-3005

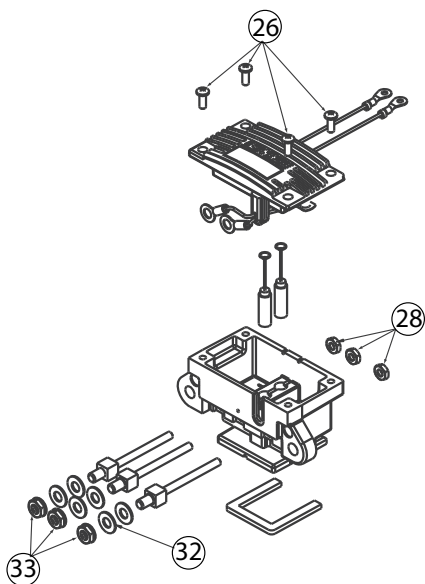
Ignition Excite



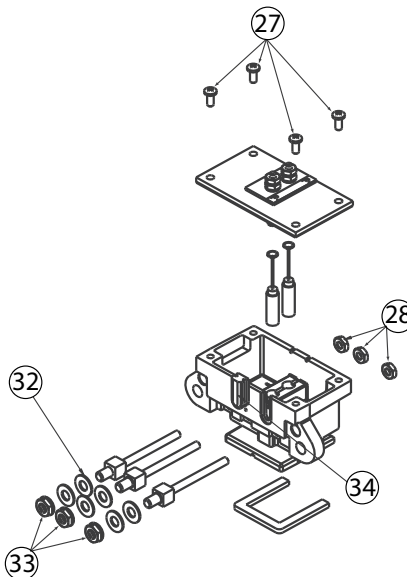
Ignition Excite
Remote Sense



Self Excite



Remote Regulated



Important: The information contained in this bulletin is intended for use by trained, professional technicians who have the proper tools, equipment, and training to perform the required maintenance described above. This information is NOT intended for 'do-it-yourselfers', and you should not assume that this information applies to your equipment. If you have any questions regarding this information please visit our website at www.prestolite.com, or contact our technical service department at:

Date: JULY 7, 2017

Bulletin No: TSB-3005

Description	Qty.	Key	Where used
NUT, 5/8-18, LOCK	1	1	Fan Nut
KEY, WOODRUFF #8	1	3	Shaft key
SCREW, THREAD FORMING	5	4	Front housing retainer plate holding screw
NUT	3	5	Internal stator nuts to AC-taps
SCR TPG 6-32x11/32phw	4	6	Internal Positive Rectifier connector plate screw
#10 HEX/WSHR. Hd. Scr.	2	7	Hex screw for internal Rect. Jumper plate
WASHER FLT.203-.500-.0	4	8	Flat washer on internal rectifier connector plate screws
BUSHING , INS.	6	9	Black internal post insulator
BOLT 5/16 x 2-1/2"	1	10	Positive post bolt, short side with clear cap, no connect
BUSHING, INSULATION	2	11	Cardboard insulator for internal bolt insulation
NUT, TENZ -5/16-18	2	12	Con. Nut for positive post
NUT,HEX 5/16-18	1	13	External positive post nut, lower
WASHER 5/16"	1	14	External positive post flat washer
STUD COVER	1	15	Used to cover positive post bolt externally that is not used.
WASHER LCK	2	16	External positive post lockwasher
NUT	1	17	External positive post nut, top
LOCKWASHER 3/8"	2	18	Lockwasher used on negative bolts externally
BOLT - 5/16" x 3/4"	2	19	External negative Bolts, holds negative plate
BOLT- 3/8" x 3/4"	2	19	External negative Bolts, holds negative plate
BOLT BUTTON HEAD-5/16"x 3/4	1	19	External negative Bolts, holds negative plate
THRU.BOLT PACKAGE-3.5	4	20	Thru-Bolts holds Alternator together/ Shorter (3.5"L)
BOLT,THRU 1/4X20- 4.12	4	20	Thru-Bolts holds Alternator together/ Longer (4.12"L)
SCREW	2	21	External negative rectifier flat head screws
LOCKWASHER #10	2	22	Used on screws in negative external rectifier
SCREW	2	23	External negative rectifier hold down bolts
LOCKWASHER 1/4"	2	24	Lockwasher on external negative rectifier bolts/ Hold down bolts
BUSHING , INS.	2	25	White internal post insulator
SCREW	4	26	Regulator screws for internal regulator
SCREW	4	27	Regulator screws for regulator plate with external regulator
NUT,STEEL #10-32	3	28	Used on brush box internal nut stator is attached above nuts
SCREW	3	29	Square headed screw used on brush box
LOCKWASHER #10	2	31	Used on brush box, IGN term. SYNC term.
WSHR FLT .266-.562-	8	32	Flat washer for brush box AC-Taps
NUT	3	33	Ac Tap Con Nuts
GROMMET - NO HOLE	1	34	Gromet on brush box

Important: The information contained in this bulletin is intended for use by trained, professional technicians who have the proper tools, equipment, and training to perform the required maintenance described above. This information is NOT intended for 'do-it-yourselfers', and you should not assume that this information applies to your equipment. If you have any questions regarding this information please visit our website at www.prestolite.com, or contact our technical service department at:

Date: JULY 7, 2017

Bulletin No: TSB-3005

Description	Qty.	Key	Where used
SCREW	2	35	Rectifier plate hold screws
SCREW #10 X 1 1/4"	2	36	Holds negative rectifier to rear housing
SCREW #10 X 1 1/2"	2	37	Holds positive rectifier to rear housing
BOLT-M10X20	1	38	Neg cable bolt
M10 LOCKWASHER	1	39	Neg cable bolt lockwasher
INSULATOR	4	40	Neg ring insulator
WASHER FLAT 5/16"	1	41	Positive bolt hardware
WASHER FLAT 5/16"	2	42	Positive bolt hardware
NUT M8	2	43	Positive bolt hardware
NUT M8	1	44	Positive bolt hardware

Important: The information contained in this bulletin is intended for use by trained, professional technicians who have the proper tools, equipment, and training to perform the required maintenance described above. This information is NOT intended for 'do-it-yourselfers'; and you should not assume that this information applies to your equipment. If you have any questions regarding this information please visit our website at www.prestolite.com, or contact our technical service department at: